

EXPLORING THE Campsie Fells

The Campsies are a beautiful area of countryside on the doorstep of many of Scotland's towns and cities. Over 400 square kilometres in area and within walking distance from many of the surrounding settlements, there is easy access by bus from Edinburgh and Glasgow.

Sitting close by are visitor attractions such the Country Parks at Mugdock and Plean, the Forth & Clyde Canal, the Falkirk Wheel, the Antonine Wall and the West Highland Way. Paths and tracks lead from all these places into and through the Campsies.

The Campsies contain many attractions of their own that are well worth discovering too. There are dramatic peaks like Dumgoyne and Meikle Bin and castles and forts such as the remains of Sir John de Graham's castle and the nearby re-created fort of Duncarron.

Accessible too are longer routes like the Pipe Track in the west and the Spout of Ballochleam south of Kippen that are perfect for cycling or walking. Many of these tracks connect the beautiful villages within the Campsies making for a great day's exploring.



KNOW THE CODE before you go



Enjoy Scotland's outdoors responsibly

Everyone has the right to be on most land and inland water providing they act responsibly. These access rights and responsibilities are explained fully in the Scottish Outdoor Access Code.

Find out more at outdooraccess-scotland.com or by phoning your local Scottish Natural Heritage office.

For a free leaflet outlining the law on access to the outdoors in Scotland send an SAE to ScotWays.

For more detailed information on the law on access rights and rights of way in Scotland see: Access Rights and Rights of Way: A Guide to the Law in Scotland by Prof. R.R.M. Paisley. Available from ScotWays, price £5.

Scottish Rights of Way and Access Society

24 Annandale Street
Edinburgh EH7 4AN
0131 558 1222
info@scotways.com
www.scotways.com



This leaflet was funded by ScotWays and Scottish Natural Heritage and the project to build a bridge in the Endrick Valley was part-financed by the Scottish Government and the European Community Forth Valley and Lomond LEADER 2007-2013 programme, the Brown Forbes Memorial Fund and the Hugh Fraser Foundation.



HERITAGE PATHS IN THE CAMPSIE FELS

A GUIDE TO ONE OF SCOTLAND'S HIDDEN TREASURES



Scottish Rights of Way and Access Society
Safeguarding Public Access since 1845

THE HERITAGE PATHS Project

The Heritage Paths Project aims to identify as many old paths and tracks across Scotland as possible, to research those paths and to promote them for people to use. The Project classifies Heritage Paths as old paths or roads that have been used for a specific purpose and they include a wide range of types of path.

Types of path that we are interested in include Roman roads, medieval roads, coffin, kirk and pilgrimage routes, drove roads and military roads, along with many other types of route.

ScotWays intends to raise awareness of this part of our historic record by recording Heritage Paths and by promoting public use of those that can still be followed or visited. We aim to help secure their long-term care through people enjoying and appreciating them.

For more information about Heritage Paths, see our website heritagepaths.co.uk where you can find details of hundreds of historic paths throughout Scotland with information about their history and accessibility.



The Drove Loan as it heads west from the Tak ma Doon Road

HERITAGE PATHS IN THE Campsies

People have lived and travelled through the Campsie Fells for many centuries and as a result, there are a large number of historic paths criss-crossing the area. The proximity of the Campsies to Scotland's principal cattle market in Falkirk has left a legacy of old drove roads imprinted on the landscape. Some of these, such as the Crow Road, are now within the modern road network but those that are not are depicted in this map.



The recently built bridge over the Burnfoot Burn

Photo Richard Barron

Through the Heritage Paths Project, ScotWays has tried to improve the accessibility of the routes on this map. One of our biggest contributions has been the building of a bridge on a route linking the Carron Valley with Kippen.

Despite this, some of the paths in the area have been little used for many years and so are occasionally challenging to find and walk. Anyone interested in exploring the historic tracks shown in this map should consult a modern Ordnance Survey map and the relevant route description from our website at heritagepaths.co.uk

ABOUT ScotWays

The Scottish Rights of Way and Access Society (ScotWays) is a charity dating from 1845 and has as its objectives: *"The preservation, defence, restoration and acquisition for the public benefit of rights of access over land in Scotland including public rights of way and their amenity."*

ScotWays is one of the world's oldest access bodies and its reputation was made in the 19th century by fighting and winning some major legal battles against landowners. Some of our most famous victories came in the mid 19th century when the Society won the right to access the old drove road, Glen Tilt and, later, another old drove road, Jock's Road, which bankrupted the Society at the time.

Over time ScotWays has developed and now achieves much by negotiation and mediation, rather than confrontation, but it continues to be recognised for its expertise on legal issues with a place on the National Access Forum and on many Local Access Forums. ScotWays also maintains the National Catalogue of Rights of Way and responds to over a thousand access enquiries every year.

More recently ScotWays has combined its history and knowledge of paths to create the Heritage Paths Project. ScotWays' continued work is only possible through membership subscriptions and donations.

If you would like to support our work please visit scotways.com or contact us at:

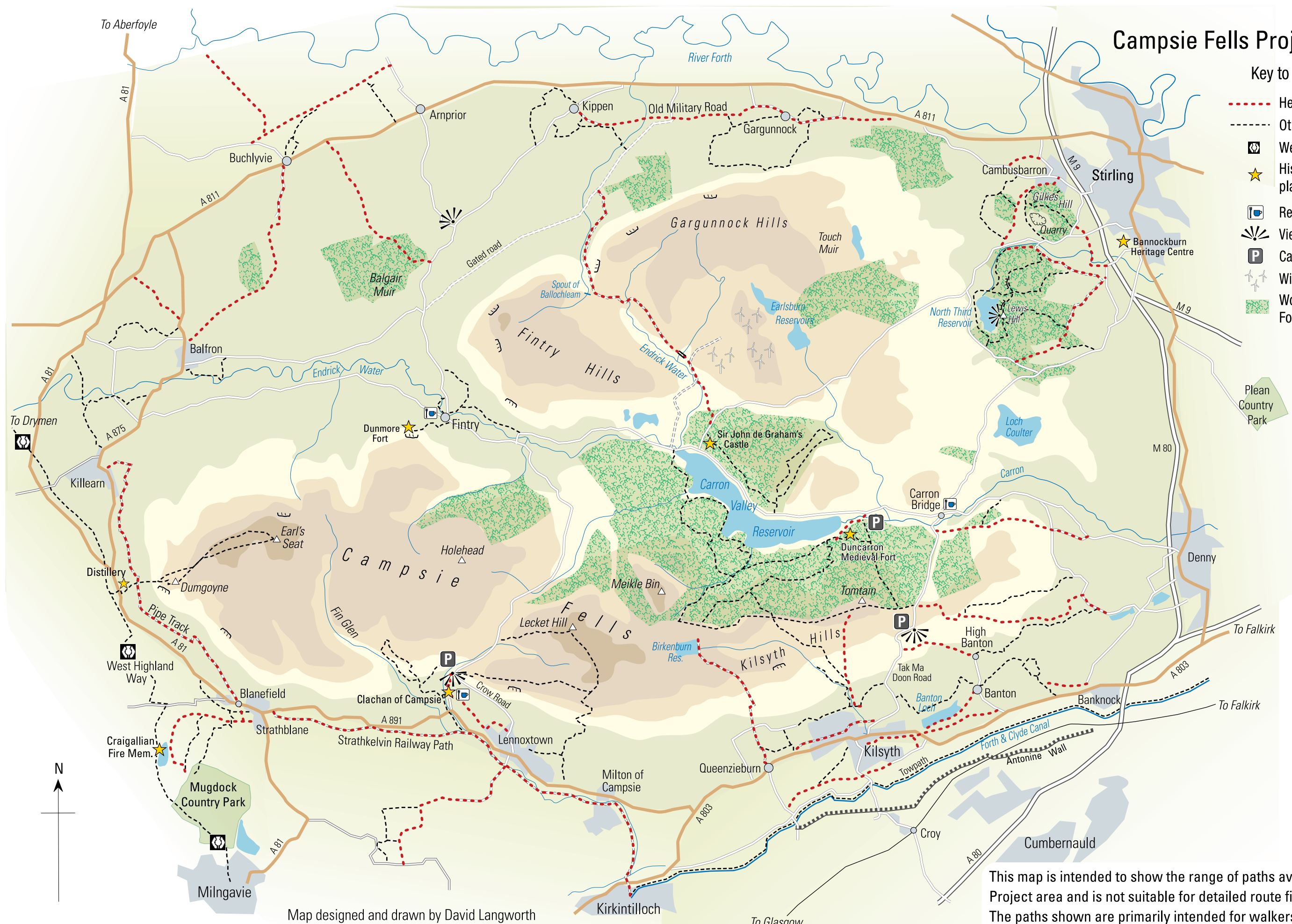
ScotWays

24 Annandale Street
Edinburgh, EH7 4AN

Campsie Fells Project Area

Key to map symbols

- Heritage path
- Other Path
- West Highland Way
- ★ Historical feature/ place of interest
- Refreshment
- Viewpoint
- P Car parking
- Wind Turbines
- Woodland/ Forest plantation



Map designed and drawn by David Langworth for ScotWays Heritage Paths Project.

This map is intended to show the range of paths available in the Project area and is not suitable for detailed route finding. The paths shown are primarily intended for walkers and you should refer to the following maps for navigation: OS Landranger (1:50,000) series 57, 64. OS Explorer (1:25,000) series 348.